



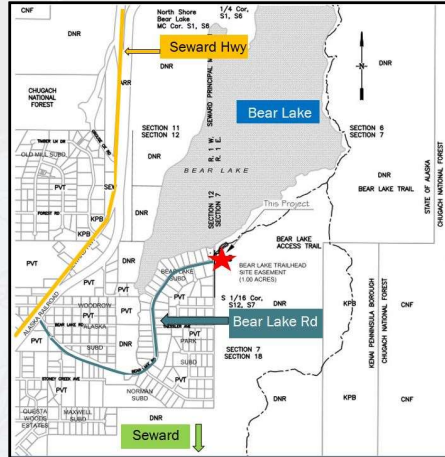
Bear Lake Trailhead Project

Katherine Benzmiller, Joshua Borders, Cody Kapotak, Barry Otwell, Owen Rohler
Department of Civil Engineering
Professional Mentor: Chuck Casper, PE
Faculty Advisor: Dr. Vinod Vasudevan, PE
April 17, 2020



Abstract

The U.S. Forest Service has requested plans for the proposed development of a trailhead within the Bear Lake subdivision, located about 7 miles north of Seward, AK. Currently, trail access is limited to street parking along neighborhood roads, potentially leading to street congestion and private driveway blockage. The proposed trailhead is to be constructed within an approximately one-acre easement owned by the USFS and will provide improved parking and public access to the Southern Trek of the Iditarod National Historic Trail.



Design Considerations

In addition to the requirements of the project scope, aspects considered in design development included:

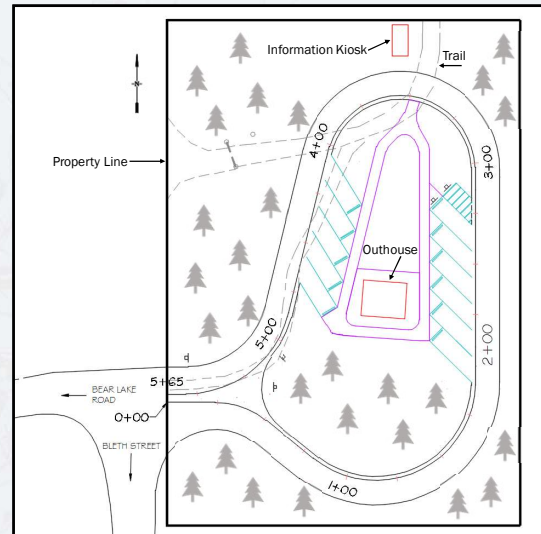
- Sufficient parking
- Satisfy Americans with Disabilities Act (ADA) requirements for parking, paths, and facilities
- Adequate curve radii for recreational vehicles
- Minimize pedestrian road crossings
- Maintain privacy between trailhead and nearby private residences
- Aesthetically pleasing design

Design

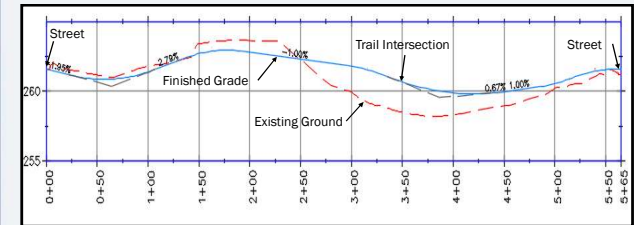
The 35% design of Bear Lake Trailhead features:

- One-way asymmetrical loop driveway
- Road and trail access
- 10 passenger car parking spaces with 1 ADA compliant van accessible space
- Pedestrian pathways from parking areas to facilities and trail
- Outhouse and information kiosk
- F-1 aggregate surfacing on driveway, parking areas, and pedestrian pathways
- Northwest corner of site remains wooded to maintain privacy for private property owner.
- Drainage system including drainage ditches on loop exterior and five 18-inch corrugated polyethylene pipe culverts
- Grading generally follows natural terrain

Preferred Alternative:



Plan View



Section View Along Centerline

Project Scope

LOGO Engineering was tasked with the development of three alternatives for the Bear Lake Trailhead project for USFS. The alternatives were to include:

- Road access
- Trail access
- Passenger vehicle parking
- Outhouse
- Informational kiosk

A preferred alternative was selected by the client and 35% design plan sets were produced.

Conclusions

The 35% design for Bear Lake Trailhead produced by LOGO Engineering for the U.S. Forest Service:

- Provides site visitors with adequate parking, road access, trail access, and amenities
- Compliments the natural surroundings with an aesthetically interesting design
- Significantly improves overall visitor experience

Special thanks to: Chuck Casper, PE
Griffith Berg
Dr. Vinod Vasudevan, PE

Josh Latham
Jason Johnston, PE